



Welcome

to
Year 9
Choices
Booklet

Contents

Page Number	Information available to you
4	Letter from the Associate Principal
5	Guide to the Curriculum
6	Tutor Time in KS4
7	GCSE Maths
8	GCSE English Language
9	GCSE English Literature
10	GCSE Science
11	GCSE Triple Science
12	GCSE Citizenship
13	GCSE History
14	GCSE Geography
15	GCSE German
16	GCSE Spanish
17	GCSE Religious Studies
18	GCSE Sociology
19	GCSE Psychology
20	GCSE Business
21	BTEC Digital Information Technology
22	BTEC Sport
23	BTEC Hospitality and Catering
24	BTEC Health and Social Care
25	BTEC Engineering
26	GCSE Art Textiles
27	GCSE Art and Design
28	BTEC Music
29	GCSE Drama
30-31	Making your choices
32	Grading in KS4 - GCSE and BTEC
33-34	Revision Tips
35-36	Post 16
37	Notes pages

Letter from the Associate Principal

Parent/Carer,

During year 9, we work with students and their families to consider the Key Stage 4 curriculum that they will follow.

At Grace Academy Darlaston, we offer every student the personalised opportunity to achieve success and gain a range of valuable skills and qualifications for their future. In order to secure this, we have an innovative and exciting curriculum that will provide your child with a variety of opportunities.

Our core curriculum offers a broad and balanced base of qualifications for students' futures, as well as a range of other subjects that are creative, practical and engaging.

During Parents Evening, you and your child will have the opportunity to investigate the range of subjects we offer at Key Stage 4. Your child will have been in assemblies and lessons to introduce the choices they can make for their next steps in education.

This booklet outlines the subjects on offer with key information to help your child make an informed decision throughout this process. It also provides information on the 'English Baccalaureate' which is a set of subjects at GCSE that keep young people's options open for further study and future careers.

It is your child's opportunity to explore their interests, prepare for their future, and begin further studies that may flourish into careers. It is important to consider carefully the courses that they will follow. We advise that your child's courses are based on their interests, their passions and their goals for the future.

I encourage you to contact Sophie Chance if you require any further information or to discuss the Key Stage 4 subjects.

Yours sincerely,

Julie Anstey

Associate Principal



Grace Academy Darlaston Curriculum

At Grace Academy Darlaston, all students study a broad and balanced range of subjects. These subjects provide a variety of opportunities and ensure every student develops the skills and knowledge required to gain qualifications leading to further education, employment or training.

All students will study core subjects and some students will study a language in order to gain the 'English Baccalaureate'.

Core Subjects

English Language GCSE

English Literature GCSE

Mathematics GCSE

Science GCSE- worth 2 GCSE's

History and/or Geography GCSE

Physical Education (recreational)

All students will receive a regular CR lesson which contains RE, Citizenship and PSHE.

Key

GCSE- General Certificate of Education

BTEC– Pearson Tech award - Level 1/2*

WJEC –Vocational award—Level 1/2*

OCR Cambridge Nationals—Vocation award—Level 1/2*

*All vocational awards at level 2 are equivalent to 1 GCSE

Key stage 4 Option Subjects

Business GCSE

Spanish GCSE or German GCSE

Psychology GCSE

Sociology GCSE

Religious Studies GCSE

Citizenship GCSE

Digital Information Technology BTEC

Art & Design GCSE

Art Textiles GCSE

Hospitality & Catering WJEC

Health & Social Care BTEC

Engineering WJEC

Performing Arts BTEC

Music BTEC

Sport BTEC

Grading

GCSE subjects will be graded using a 1 - 9 scale. A grade 9 is the highest grade that can be achieved by a student.

Vocational awards (which are equivalent to a GCSE) will be graded using a pass, merit, distinction or distinction* system. Distinction* is the highest award that can be achieved.

Tutor Time in Key Stage 4

Tutor Times form a key part of Key Stage 4 life. Students will be allocated a tutor group and a designated tutor will help monitor progress and the personal development of each student. This will contribute to the SMSC (Spiritual, Moral, Social & Cultural) delivery that the academy provides which helps to build our students' character.

Tutor times will deliver Ethos information, SMSC and activities relating to the Grace Academy values to Key Stage 4 students, as well as citizenship and relationships. An exploration of key concepts in SMSC will give students the building blocks with which to construct their understanding of belief systems, and the context in which to develop the attributes of a spiritually-educated young person. Below is a typical week of tutor activities for a Key Stage 4 student.

Typical Week for a Year 10 Student:

For more information, please see Mr Miles (Acting Associate Vice Principal).

Mon	News Tutor Housekeeping (Check Gold stars/consequences/ attendance)
Tue	Reading
Wed	Resilience/ Character Development
Thu	Ethos Topic Work (Half-termly activities exploring the ethos and values of the academy).
Fri	Yr 10 Assembly



GCSE Mathematics

What is it? What do you do?

This qualification in mathematics encourages students to develop confidence in, and a positive attitude towards, mathematics and to recognise the importance of mathematics in their own lives and to society. This qualification prepares students to make informed decisions about the use of technology, the management of money, further learning opportunities and career choices. The course aims to develop knowledge, skills and understanding of mathematical methods and concepts, including:

- Number
- Algebra
- Geometry
- Measures
- Statistics
- Probability

This will allow students to use their knowledge and understanding to make connections between mathematical concepts.

A key benefit of the course is gaining the ability to apply the functional elements of mathematics in everyday and real-life situations. There is a greater emphasis on problem-solving and mathematical reasoning, with more marks in the GCSE exams being allocated to these higher-order skills.

What can I do with this subject when I join Post 16?

Maths will give you a skill seen as a foundation for many career choices and will allow you to study other courses such as Business Studies, Accountancy, Investment banking, Computing and Engineering.

Course Details

Led by Mr L Garner

Exam board:

Higher- Edexcel

Foundation- OCR

Assessment Summary

100% exam

GCSE English Language

What is it? What do you do?

The course allows students to:

- Develop the ability to communicate clearly through a speaking and listening endorsement, which manifests in accuracy and efficacy in speaking and writing tasks
- Learn how to use a wide range of vocabulary and the correct grammar, spelling and punctuation
- Develop a personal style and an awareness of the audience being addressed.

Learners are also encouraged to read widely, both for their own enjoyment and to further their awareness of the ways in which English can be used.

What can I do with this subject when I join Post 16?

English GCSE is the prerequisite for all employment opportunities, training, college and post 16 courses

English graduates are keenly sought after by employers who respect and desire the skills that are acquired through this subject. Popular career routes include education such as research or teaching, law, media, journalism, advertising, public relations and politics.

Famous English graduates in the media include cartoonist, writer and illustrator Quentin Blake, Danny Boyle, actress Emma Thompson and broadcaster Natasha Kaplinski.

Course Details

Led by Miss A Parshotam

and Mr S Coley

Exam board: AQA

Assessment Summary

100% examination and spoken language assessment

GCSE English Literature

What is it? What do you do?

Students:

- Engage with and develop the ability to read, understand and respond to a wide range of literary texts from around the world
- Develop an appreciation of the ways in which authors use literary effects and to develop the skills needed for literary study
- Explore the author's use of language to create effects
- Find enjoyment in reading literature and understand its influence on individuals and societies.

English Literature requires students to demonstrate application and understanding of:

- Prose, poetry and drama texts, and their contexts (*A Christmas Carol*, *Unseen Poetry/Poetry Anthology*, *Macbeth* and *An Inspector Calls*)
- The writers' use of characterisation, theme, plot and setting
- The writers' use of language to create literary effect own views and opinions of texts.

What can I do with this subject when I join Post 16?

English Literature GCSE is the prerequisite for all employment opportunities, training, college and post 16 courses

English Literature graduates are keenly sought after by employers who respect and desire the skills that are acquired through this subject. Popular career routes include education such as research or teaching, law, media, journalism, advertising, acting/drama, public relations and politics. Famous English Literature graduates in the media include movie producer Steven Spielberg, Stephen Fry, actress Renée Zellweger and actress Jodie Foster.

Course Details

Led by Miss A Parshotam
and Mr S Coley

Exam board: AQA

Assessment Summary

100% exam

GCSE Science

Trilogy (Combined)

What is it? What do you do?

GCSE Science is a two year GCSE course, graded 1 –9. This covers Biology, Chemistry and Physics.

What will I be doing on the course? How will it be structured?

There are 24 units of work divided between Biology, Chemistry, and Physics. You will sit two examinations in each science in Year 11. There are no controlled assessments, but you will be required to carry out 21 required practical pieces of work. These will take place in lessons and are not completed in examination conditions. There will be questions about the required practical's in your final examinations.

What skills do I need to develop to be successful at this course?

To be successful in science you need to be able to apply your knowledge to new situations. You need to have the ability to draw conclusions from data, and use the information to explain scientific theory. You should be confident in using a range of mathematical techniques.

What can I do with this subject when I join Post 16?

GCSEs in combined science can open many doors. You do not have to study Triple science to study A Levels or get onto any science course at university. or opt to stay at Grace and study for the BTEC Level 3 in Forensic & Criminal Investigation. Many universities and employers are keen for you to have good science grades as it shows you are a logical thinker.

Course Details

Led by Ms S Palmer, Miss L Duncan & Mr E Taylor

Exam Board: AQA

Assessment Summary

100% exam

GCSE Triple Science

Triple* (Single Sciences)

What is it? What do you do?

Each area is taught separately (Biology, Chemistry & Physics) and each is worth one GCSE, graded 1-9. This means you will receive 3 GCSEs in total.

What will I be doing on the course? How will it be structured?

There are 25 units of work divided between biology, chemistry, and physics. You will sit two examinations in each science specialism in Year 11. There are no controlled assessments, but you will be required to carry out 22 required practical pieces of work. These will take place in lessons and are not completed in examination conditions. There will be questions about the required practical work in your final examinations.

What skills do I need to develop to be successful at this course?

To be successful in Triple science you need to be able to work independently, apply your knowledge to new situations and cross link concepts to demonstrate a clear understanding of theory. You need to have the ability to draw conclusions from data, and use the information to explain scientific theory. You should be confident in using a range of mathematical techniques.

What can I do with this subject when I join Post 16?

GCSE's in science can open many doors. You may choose to continue and study for A levels in science, or opt for the BTEC Level 3 in Forensic & Criminal Investigation. Many universities and employers are keen for you to have good science grades as it shows you are a logical thinker.

***To study Triple Science you will need to have an end of year 11 target of a Grade 7 and be on track to achieve in Science, Maths & English. For any clarity on your grades currently, please speak to the course lead/s.**

Course Details

Led by Ms S Palmer, Miss L Duncan & Mr E Taylor

Exam Board: AQA

Assessment Summary

100% exam

GCSE Citizenship

What is it? What do you do?

Students have a comprehensive knowledge and understanding of the topical events they study the rights, responsibilities and duties of citizens; the role of the voluntary sector; forms of government; and the criminal and civil justice, legal and economic systems. They obtain and use different kinds of information, including the media, to form and express an opinion. They evaluate the effectiveness of different ways of bringing about change at different levels of society. Students take part effectively in school and community based activities, showing a willingness and commitment to evaluate such activities critically. They demonstrate personal and group responsibility in their attitudes to themselves and others.

What can I do with this subject when I join Post 16?

Citizenship gives students a knowledge of Britain, its Values, Law and how the country is run to enable them to participate in society when they leave school. After GCSE Citizenship, students could choose politics or Law at A-level and could go on to be Barrister, solicitors, politicians or teacher.

Course Details

Led by Mrs Y Cooper

Exam board: Edexcel

Assessment Summary

100% Exam

GCSE History

What is it? What do you do?

"We are made by History." History really is all around us. Looking at just three of the significant events changing our modern world now: Brexit, the Covid-19 pandemic and the monarchy of Queen Elizabeth II, history can help you to make sense and have an understanding of the world around you.

Your journey in History so far has given you the knowledge of different periods of time in your local and British history, as well as engaging and challenging topics in world history. As a History student you have built up a better understanding of why certain monarchs, governments and individuals act the way they do.

GCSE History really is an exciting time to continue to build upon the knowledge and skills you have gained already that will help to widen your mind and opportunities in the future.

We study an exciting range of fascinating topics in History that are all engaging and relevant to our modern world:

- *Conflict and Tension: the inter-war years, 1918-1939* in which we study the challenges in keeping peace in Europe in between the First and Second World War,
- *Britain: Health and the People* in which we study the history of medicine in Britain,
- *Germany 1918-1945* in which we study the significant changes of Germany and its leaders after World War One through to World War Two,
- *Elizabethan England* in which we study the dramatic and exciting reign of Queen Elizabeth I.

What can I do with this subject when I join Post 16?

What do President of the United States Joe Biden, King Charles III, actor and writer Sacha Baron Cohen and documentary filmmaker and journalist Louis Theroux all have in common? They all studied History.

A GCSE History qualification can lead to a wide-range of courses and careers. People who have studied History are well-respected because of the skills they have. Examples include, but are not limited to: journalism, accounting, law, business, teaching, anthropology, film and television, video game design and government and politics.

You could be a barrister, a broadcast journalist, a solicitor, newspaper or magazine journalist, a police officer, a teacher, an accountant, a project manager... the list is endless and the doors are open with GCSE History.

Course Details

Led by Mr J Brookes

Exam board: AQA

Assessment Summary

100% Exam

GCSE Geography

What is it? What do you do?

"Geography is everything." There has never been a better or more important time to study geography. Studying geography will be essential to meet the government's ambition to create 2 million skilled and highly-paid green jobs by 2030. It's hard for us to even begin to imagine the new green jobs which will be created in the next five years. The subject's relevance to today's world is why an increasing number of students in the UK chose it as a subject option. Geography also helps us to explore place and space and recognises the differences in cultures, political systems, economies, landscapes and environments. Geography is an education for life and for living.

It is no surprise then, that people studying geography are highly employable and gain higher than average salaries if they study it up to degree level.

GCSE geography gives you the exciting opportunity to go on two school trips (in Y10 & Y11). You will undertake fieldwork in a river surrounded by natural beauty at Carding Mill Valley and also see changes and challenges in urban environments when we visit Birmingham.

What can I do with this subject when I join Post 16?

A level Geography provides you with knowledge and transferable skills that will help you in problem solving, critical thinking, statistical analysis and the ability to think about difficult moral and ethical issues. The broad nature of skills is why it is a popular choice. Geography has strong links with sciences, social sciences (business, sociology, psychology) and humanities (history & R.E.).

At A level, you will get the chance to choose a topic you are interested in to conduct fieldwork. This is undertaken during your four-day residential trip to the beach. This is an excellent opportunity to develop teamwork and independent research skills needed for university.

Geography provides you with a diverse range of skills which is why there are numerous career pathways. For example: hydrologist; environmental consultant; conservationist; transport planner; marine biologist; landscape architect; civil engineer; cartographer and environmental manager. Due to geography's strong links with business, many geography students go on to work in: accountancy; market research; marketing; sales; human resources; consultancy; management and politics.

Course Details

Led by Miss L Guest

Exam board: AQA

Assessment Summary

100% exam

Paper 1: Physical Geography: 35%

Paper 2: Human Geography: 35%

Paper 3: Geographical applications: 30%



GEOGRAPHY IS EVERYTHING

GCSE German

What is it? What do you do?

Knowing other languages opens up the world.

With Germany being one of the UK's leading trading partners and British companies needing professionals with a good knowledge of German, GCSE German is a great choice for any career.

GCSE German helps students develop their language skills by covering topics such as 'employment and future study ambitions', 'identity and culture' and 'global and international issues'; these topics also enable students to develop an understanding of the culture of countries and communities where German is spoken. Most importantly, the GCSE encourages enjoyment of language learning and equips students to take their place in a multilingual, global society.

This four-unit specification requires students to develop their ability to write and speak in German as well as to read and listen.

What can I do with this subject when I join Post 16?

GCSE German is the must-have foundation for A level German which will then lead you to studying it either as single honour degree or combined with another subject such as law, business or where ever your interest lies.

Language graduates are sought by universities, employers and even government – the Secret Service included - due to their highly-specialised skills. Language skills are in demand and can be used in almost any career, particularly within businesses that trade internationally. Popular career routes include **finance, interpreting and translation business, education (such as research or teaching), law, media, journalism, advertising, public relations, engineering and politics.**

[Reasons to study German](#)

[Birmingham University: studying languages](#)

[What does the KS4 course involve?](#)

[A flavour of German at KS4](#)

[What do the exams look like?](#)

Course Details

Led by J. Leggett

Exam board: AQA

Assessment Summary:

100%

25% Listening

25% Speaking

25% Reading

25% Writing



GCSE Spanish

What is it? What do you do?

GCSE Spanish helps students develop their language skills in a variety of contexts and a broad understanding of the culture of countries and communities where Spanish is spoken. It encourages enjoyment of language learning and the recognition that language skills enable students to take their place in a multilingual global society.

This four-unit specification requires students to develop their ability to write and speak in Spanish and to understand Spanish when it is written down or spoken.

What can I do with this subject when I join Post 16?

Modern Foreign Language graduates are sought by universities and employers for their highly-specialised skills. Popular career routes include **education (such as research or teaching), law, media, journalism, advertising, public relations and politics**. Language skills are in demand and can be used in almost any career, particularly within businesses that trade internationally.

Jobs directly related to language learning include:

- [Interpreter](#)
- [Secondary school teacher](#)
- [Translator](#)

Jobs where language learning would be useful include:

- [Broadcast journalist](#)
- [Diplomatic Services operational officer](#)
- [English as a foreign language teacher](#)
- [International aid/development worker](#)
- [Logistics and distribution manager](#)
- [Marketing executive](#)

Course Details

Led by J Leggett

Exam board: AQA

Assessment Summary:

100%

25% Listening

25% Speaking

25% Reading

25% Writing



GCSE Religious Studies

What is it? What do you do?

We live in a rich and diverse world. Religious Studies helps you to develop your knowledge and understanding of various religious attitudes towards very real and relevant issues in our world today.

This two-unit course covers Religious beliefs, teachings and practices in both Christianity and Islam. In addition, four themes will be explored in-depth from Christian, Muslim and non-religious viewpoints. We will be studying religious attitudes towards themes such as relationships and families, religion and life, the existence of God and revelation, and religion, crime and punishment.

The course requires you to develop your sense of empathy; that is your ability to understand, argue and reason from a range of different viewpoints. A key skill developed will be to take key religious facts and phrases and apply understanding of them to a range of world issues.

What can I do with this subject when I join Post 16?

Understanding people and the ability to think for yourself are the two key skills employers need. GCSE Religious Studies is all about people, their views of the world and how we can successfully interact with others.

GCSE Religious Studies is an excellent foundation for A-Level studies, leading onto degrees that enhance your chances of careers where communication is key; such as **journalism, social work, law, education and many more**. In addition, it is suitable for a diverse range of candidates who wish to further their academic, research, enquiry and analytical skills.

Course Details

Led by Miss Dainty

Exam board: **AQA**

Specification: A

Assessment Summary

100% Exam



What is it? What do you do?

We live in a rich and diverse world. Sociology helps you to develop your knowledge and understanding of very real and relevant issues in our world, studying the society in which we live.

This course covers topic areas, such as families, education, crime and deviance and social stratification. In addition, we will explore research theories and methods, focussing on how past and present Sociologists have created studies to support their theories.

The course requires you to develop an analytical approach to the topic areas above, creating reasoned arguments and an ability to compare and contrast the perspectives that are studied. You will develop skills in investigating facts and making judgements, forming opinions and new ideas on social issues. Furthermore, you will develop your analytical skills to gain a better understanding of our social world through critical evaluation of research.

What can I do with this subject when I join Post 16?

Understanding people and the ability to think for yourself are the two key skills employers need. Sociology is all about people, how we fit into society and how we can successfully interact with others.

There is potential for you to continue to study this at Grace Academy Darlaston's Post 16 by opting to study Level 3 A-Level Sociology. GCSE Sociology is an excellent foundation for Level 3 A-Level studies, for example History, RE, Geography, Law, Psychology, English. Other routes might include BTEC Criminology.

The study of Sociology can enhance your chances of a variety of careers; such as **social work, law, educational psychologist, occupational health, nursing, civil service, politics, police force.**

To Study Sociology you will need an end of year 11 target of Grade 7 or higher and be on track to achieve in English by the end of year 9.

Course Details

Led by Miss Dainty

Exam board: **AQA**

Specification: 8192

Assessment Summary

100% Exam



What is it? What do you do?

Studying GCSE Psychology is an excellent way to give yourself a foundation knowledge of how the human mind works, understand social behaviour and human development.

Psychology is one of the most interesting and dynamic fields in the world currently. In part due to the growing awareness of mental health issues. You will study a range of topics that help you answer some important questions:

Paper 1:
Research Methods
Memory
Development
Perception

Paper 2:
Language, thought & communication
Social Influence
The brain & Neuropsychology
Psychological Problems

What can I do with this subject when I join Post 16?

It will help you to understand human behaviour and what compels people to make the decisions they do. You can then build on this knowledge, leading towards a number of exciting career opportunities including:

- Clinical psychologist
- Counselling psychologist
- Educational psychologist
- Forensic psychologist
- Further education teacher
- Health psychologist
- High intensity therapist
- Occupational psychologist

There is potential for you to continue to study this subject at Grace Academy Darlaston's Post 16 by opting to study BTEC Level 3 Psychology.

To Study Psychology, you will need to have an end of year 11 target of 7 or higher and be on track to achieve in English and Science.

Course Details

Led by Miss Cresswell

Exam board: AQA

Assessment Summary

100% exam

Paper 1: 50%

Paper 2: 50%



GCSE Business

What is it? What do you do?

You will learn about how businesses operate and develop an understanding of the following key business concepts:

- Investigating small business
 - What is entrepreneurship?
 - How to spot business opportunities
 - How to put a business idea into practice
 - How to make a business effective
 - Understanding external influences
- Building a business
 - Growing a business
 - Making marketing decisions
 - Making operational decisions
 - Making financial decisions
 - Making human resource decisions

What can I do with this subject when I join Post 16?

This subject will provide an excellent foundation for A-Level Business Studies or BTEC Business and is the starting point for those wishing to study subjects like Business, Accounting, Finance and Economics at university level. GCSE Business Studies also provides a great overview of how organisations operate which is useful if considering starting a small business.

Course Details

Led by Miss A Brooks
Exam board: Edexcel

Assessment Summary

Two external exams

Theme 1 50%

Theme 2 50%

Digital Information Technology – Level 1/Level 2 Tech award

What is it? What do you do?

What will I be doing on the course? How will it be structured?

BTEC Digital Information Technology gives you the opportunity to develop sector-specific knowledge and skills in a practical learning environment.

You will develop key skills in digital information technology such as project planning, designing and creating user interfaces (mobile apps and websites), and creating dashboards to present and interpret data processes that underpin effective ways of working.

The first mandatory unit involves analysing a variety of user interfaces. This will include the efficiency and functionality of several unique interfaces. Once analysed, pupils will be challenged to plan and create an effective user interface of their own which is efficient and user friendly. This unit will be assessed internally.

The second mandatory unit will also be assessed internally. Pupils will be tasked in collecting, presenting and interpreting data in an effective manner. Pupils will be exposed further to software's previously used at Ks3 so that they can manipulate and present data in an appropriate format.

The third and final unit will be assessed externally. Pupils will be tasked with evaluating a variety of professional digital systems based on their efficiency and productivity. Pupils will identify security threats and legislation that is used in the digital world and will analyse impacts they have on an individual as well as an organisation.

What skills do I need to develop to be successful at this course?

To be successful on this course you must have a passion for ICT and information systems. The course has 2 core units that promote pupils to work independently and this is essential in order to complete these projects.

Students will also need have a cognitive mindset in order to complete the external based unit. Pupils will require to think logically and intuitively in order to be successful

What can I do with this subject when I join Post 16?

There is potential for you to continue to study this at Grace Academy Darlaston's Post 16 by opting to study BTEC Level 3 IT or T - Level Digital Production Design & Development.

Course Details

Led by Mr S Ali

Exam board: Pearson BTEC

Assessment Summary

40% exam

60% internal assessment



BTEC Tech Award in Sport

What is it? What do you do?

This course is equivalent to 1 GCSE.

The Pearson BTEC Level 1/Level 2 Tech award in Sport is for learner who want to acquire sector-specific applied knowledge and skills through vocational context by exploring the different types and providers of sport and physical activity and the equipment and technology available for participants as part of their KS4 learning. They will also explore the different types of participants and their needs in order to gain an understanding of how to increase participation for others in sport and physical activity and further develop their knowledge and understanding of anatomy and physiology.

Learner will undertake a physical session to develop skills in planning and delivering sports activity sessions to participants.

It will enable learner to develop their sector specific skills, such as sport analysis and sports leadership, using realistic vocational contexts, personal skills, such as communication, planning, time management and teamwork through practical and skills-based approach to learning and assessment.

What can I do with this subject when I join Post 16?

In a world where P.E./Sport takes centre stage world wide in events as diverse as Football, The Olympics, and the Winter Olympics, students can take studies into further and higher education in order to pursue a career within a wide range of sports-related careers e.g. sports nutrition, athletics, coaching.

Course Details

Led by Mrs S Biddlecombe

Exam board: Edexcel

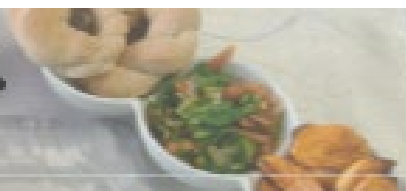
Assessment Summary

60% Coursework

40% External Assessment

Hospitality and Catering

WJEC Level 1 /2 Vocational Award



What is it? What do you do?

This course concentrates on the hospitality and catering industry. You will develop the knowledge and understanding related to a range of hospitality and catering providers; how they operate and what they have to take into account to be successful. You will have the opportunity to learn about issues related to nutrition and food safety and how they affect successful hospitality and catering operations. In this qualification, you will also develop food preparation and cooking skills as well as transferable skills of problem solving, organisation and time management, planning and communication.

You will learn about the hospitality and catering industry by:

- **Doing lots of practical work to learn new skills with weekly practical lessons.**
- **Practical competitions**
- **Visiting speakers/ case studies.**

The great bonus of this course is that there is a strong emphasis on gaining the required skills and knowledge via practical work so it is great for anyone who wants to learn 'by doing'.

What can I do with this subject when I join Post 16?

Our food tastes are forever changing and there is a need for creative and talented people to join the catering industry.

This qualification can be studied in Higher Education and Post 16 and can lead successfully to many career paths: **Head Chef, Chef, nutritionist, restaurant owner, food safety, Cake designer, Caterer, Dietarian etc**

Course Details

Led by Mrs A. Rikunenko / Ms A Richardson
Exam board: WJEC

Assessment Summary

60% Controlled assessment

40% Exam

How will I be assessed?

Unit 1: The Hospitality and Catering Industry

will be externally assessed with an examination that lasts 90 minutes. This unit is worth 40% of your final grade.

Unit 2: Hospitality and Catering in Action

is internally assessed:

This involves you completing a piece of controlled assessment in school under examination conditions. You will be set a task by WJEC and will have to safely plan, prepare, **cook** and present nutritional dishes. This unit is worth 60% of your final grade.



Health & Social Care

What is it? What do you do?

This exciting course will give you a vocational look into the world of Health and Social care. The course is split into 3 units. This course includes contemporary issues in relation to health, social care and early years sectors in the UK.

Unit 1: Human Development In this examination unit, the aim is for you to demonstrate understanding and knowledge of aspects of human development across the lifespan of individuals and groups.

Unit 2: Service Provision In this non-examination assessment (NEA) unit, the aim is for you to carry out research that demonstrates understanding of the legislation and principles of care that underpin the work of key professionals.

Unit 3: Contemporary Issues in Health, Social Care and Early Years Services In this NEA unit, the aim is for you to understand the statistics and challenges for society and individuals for a range of contemporary issues, and to understand the relevance of health promotion initiatives.

What can I do with this subject when I join Post 16?

This subject will give you a great foundation for further study at Post 16 or in Higher Education.

This qualification can lead successfully to many career paths: **Midwife, Nurse, Doctor, Nursery Nurse, Social Workers, Healthcare Assistants, Occupational therapists, Youth Workers, Care Assistance, Care managers, Support Workers and many more.**

Course Details

Led by Mrs A. Rikunenko

Exam board: WJEC

Assessment Summary

60% Controlled assessment

40% Exam



What is it? What do you do?

This exciting, creative and practical course that is comprised of three parts. You will produce need to produce a range of ideas to meet a problem, this is worth 30% of your overall grade. You will then produce a product to a given design this is worth 40% of your overall grade. You will also complete an external exam unit worth 30% of your final grade.

This course uses a practical approach to encourage you to design and make products with creativity and originality in a variety of practical activities, using a range of materials and techniques. You are encouraged to take ownership of your ideas and to explore them in an inventive and expressive manner as a creative journey. This is an intense and time demanding course!

What can I do with this subject when I join Post 16?

In a world where new products and technologies are developing every day, there is a need for creative and hardworking people to develop and make new products for use.

This qualification can be studied in Higher Education and Post 16 and can lead successfully to many career paths: **designer, architect, interior designer, engineer, product designer, automotive design, textile designer, manual worker.**

Course Details

Led by Mrs A. Rikunenko
Exam board: Edexcel Pearson

Assessment Summary

60% Controlled assessment
40% Exam

Unit 1: Manufacturing engineering products

Have the opportunity to interpret different types of engineering information in order to plan how to manufacture engineering products. Develop knowledge, understanding and skills in using a range of engineering tools and equipment in order to manufacture and test a final product.

Unit 2: Designing engineering products Explore how an engineered product is adapted and improved over time. It offers the opportunity to apply your knowledge and understanding to adapt an existing component, element or part of the product that you will have manufactured for Unit 1.

Unit 3: Solving engineering problems Introduced to a range of considerations that impact on engineering design and how modern engineering has had an impact on modern day life at home, work and in society in general.



What is it? What do you do?

GCSE Art Textiles is an exciting, creative and practical GCSE which aims to build on knowledge and skills learned throughout your art curriculum in years 7 and 8. This course develops your understanding of the visual elements of art as we learn to apply these to textiles techniques. During the course we work with a wide range of textile materials and decorative techniques, allowing you to experiment and be creative.

If you are creative, hard-working and want to learn more, this could be the course for you!

Creating great art does take time and the department offers lots of lunchtime and after school clubs so that you can practise your skills, explore new media and develop ideas.

This is aimed at students who enjoy art and want to apply these skills to a textile outcome. We work in both two and three dimensions.

Not only will you develop your practical skills, but also your analytical skills. An appreciation of other artists' work is an important part of the course and learning about the techniques that artists use and the purpose of their work will help you to improve and make progress.

This is an intense and time demanding course and there is written work involved alongside practical activities.

What can I do with this subject when I join Post 16 ?

In a world where trends change from one minute to the next, there is a need for a new generation of textiles designers to help keep our fashion and homes up to date.

This qualification can be studied in Higher Education and Post 16 and can lead successfully to many career paths: **textiles designer, fashion designer, sportswear design, interior design, illustration, stylist, costume design, teaching etc.**

Please note – this cannot be chosen as well as Art and Design.

Course Details

Led by Ms E Irvine

Exam board: OCR

Assessment Summary

60% Controlled assessment

40% Exam

GCSE Art and Design

What is it? What do you do?

Art GCSE is a really exciting and rewarding course which aims to build on the knowledge and skills you have established in Years 7 and 8. If you enjoy Art, you're creative and hard working and want to learn more, this could be the course for you. Creating great art does take time and the department offers lots of lunchtime and after school clubs so that you can practise your skills, explore new media and develop ideas. This is aimed at students who like all areas of art and enjoy working in both two and three dimensions. Not only will you develop your practical skills, but also your analytical skills. An appreciation of other artists' work is an important part of the course and learning about the techniques that artists use and the purpose of their work will help you to improve and make progress.

This is an intense and time demanding course and there is written work involved alongside practical activities.

What can I do with this subject when I join Post 16?

In a world where we are constantly bombarded with visual imagery, visual literacy is increasingly important. A career within the Arts is possible, with hard work, dedication and commitment.

This qualification can be studied in Higher Education and Post 16 and can lead successfully to many career paths: **designer, animation, freelance artist, advertising, illustration, photographer, film and television, architect, interior designer, textile designer, fashion, teaching and gallery work/ curator etc.**

Please note: this cannot be chosen as well as Art Textiles

Course Details

Led by Miss T Kaur

Exam board: OCR

Assessment Summary

60% Controlled assessment

40% Exam



What is it? What do you do?

The external assessment (exam) will test your knowledge of the different types of organisations that make up the music industry and specific job roles such as musician, sound engineer, DJ, record producer, roadie, publisher and venue owner. You will investigate music organisations to find out about the work they do and how they relate to and reply on one another.

The controlled assessments comprise **three** further units of study that include:

Music Performance: Studying rehearsal technique and performing on your chosen instrument

Composition: Creating your own piece of music

Music Sequencing: Learning more about using a DAW such as logic

Introduction to Live Sound: Understanding health and safety at a live event as well as controlling the sound at a live event

Managing a Music Product : Creating and promoting a CD or Live music event

Throughout these units you will develop your music performance skills and review your own practice; explore creative stimuli to meet a brief (composing); develop, extend and shape music for performances; present compositions appropriately using Logic Pro X software; plan, develop and deliver and promote a music product.

What can I do with this subject when I join Post 16?

Successful completion of this course can be a springboard into further education for Performing Arts at level 3, Music Technology AS/A Level or BTEC Level 3 Music Technology or Drama.

Course Details

Led by Mrs Cooper

Exam board: Edexcel

Assessment Summary

75% Controlled assessment

25% External assessment



GCSE DRAMA

What is it? What do you do?

This qualification allows opportunities for you to build on your drama work in KS3, to create, perform and respond to theatre. You will develop and enhance your performance and presentation techniques, devise your own original dramas, perform script extracts and write about your own work as well as professional work that you have watched.

In year 10 you will spend time improving your practical performance and written skills as well as developing your knowledge of plays, practitioners, styles and genres of theatre in preparation for the examinations in year 11.

In Component 1 you devise your own drama in response to a stimulus and create a written portfolio of supporting work.

In Component 2 you will need to work as actors to perform two extracts of a play before an audience. You will be required to work to a high standard in all rehearsals and commit to improving your work throughout the rehearsal process.

In the final component, you will write a live theatre review and complete a written examination demonstrating your knowledge of theatre, and how actors, directors and designers interpret a play text.

This is a rewarding but challenging course which requires you to show commitment to your drama work by attending additional rehearsals after school when required. It suits confident, thoughtful students who enjoy performing, writing and working with others. The subject is a good accompaniment to English, English Literature, Arts and Humanities subjects.

What can I do with this subject when I join Post 16?

This qualification can be studied at level 3 Post 16 and can lead to varied career paths in media, marketing, broadcasting, theatre, film, television, sales, management, social work, policing or teaching, to name a few.

Course Details

Led By Ms C Beaven

Exam board: Eduqas

Assessment Summary

40% internal assessment
(practical and written)

60% external assessment
(practical and written)

Making your choices

You can use this space to see how the choices are set out in blocks. This will give you an idea of the range of subjects you may be able to study together, in addition to the core subjects.

Please be aware that we will do our utmost to meet your preferences, however, these blocks are subject to change and you are not guaranteed your first choice in all areas.

Important Information:

History / Geography:

You must select at least one of these subject. You can opt for both, or just one.

Art / Textiles:

Although they are in different blocks, you must select either Art or Textiles, students cannot opt to do both.

Blocks	A	B	C	D
Subjects	Geography*	History*	RE	Triple Science
	History*	Engineering	Sport	Textiles*
	Drama	Sport	Business	Food Tech
	Food Tech	ICT	Spanish	Citizenship
	Health and Social Care	Sociology	German	Engineering
	ICT	Health and Social Care	Psychology	Business
			Art*	Music
			Food Tech	
			History*	
Write your 1 st choice from each block				
Write your 2 nd choice from each block				

Use this space to note your preferred combination of courses by selected **one subject from each block** (A, B, C and D).



How will my child make their final choices?

All year 9 students will have an opportunity to complete their choices from their homes, with the process starting 10th Feb and ending on the 15th

Students will only get one choice (1st choice) within each block. All option places are subject to the amount of people that opt for that course. We will ask students to select a second choice but this will only be used if we have no space in the subject they have selected as 1st choice.

There will be support available within the sessions for anyone who may need it.

If you have any additional questions, please contact Mr Mann (Head of KS3) or Ms Chance (Acting Associate Vice Principal).



GCSE and BTEC Grading System

Legacy GCSEs	New GCSE Grades	Vocational Qualifications	
A*	9	Distinction * 8.5	Level 2
	8		
	A		
B	6	Merit 5.5	
	5		
C	4	Pass 4	
D	3	Distinction * 3	Level 1
E	2	Distinction 2	
F		Merit 1.5	
G	1	Pass 1	
U	U	Not Yet Achieved (NYA)	



GCSE Grading:

From 2014 GCSE grades changed from letters to numbers. The **highest grade your child can achieve is a Grade 9 and 1 is the lowest**. This table shows you how the new GCSE grades compare with the old letters.

Vocational Grading:

At Grace Academy Darlaston we offer a range of vocational qualifications in Years 10 and 11 to complement GCSEs. These are **vocational** qualifications. Students complete **coursework** through their two years of study and **sit examination units** that all go towards deciding their final grade. **These grades range from a Distinction* to a Pass. Students have two attempts to sit their examination unit and improve their grade.**

We encourage all our students to aim for their target grade or higher at GCSE and in their vocational examinations.

What can my child use to revise at home?



Revision Guides: -

All students have been given a revision guide for all their subjects. Revision guides have what students need to know, as well as quizzes, exam practice questions and tips and advice on how to answer questions in their final GCSE exams.

It is important they use these for revision, homework when asked to and look after them as they're an important tool for revision.

Online Resources—Digital Learning on the Student SharePoint

There is a huge range of online resources at Grace Academy Darlaston for students to use. These can all be accessed from the Student Login on our Website homepage. Homework, lessons as well as coursework guidance for all subjects is set on Microsoft Teams.

Seneca Learning, GCSEPod, MyMaths, BBC Bitesize are just a few of the websites students can use to revise.



If you are self isolating, in isolation or working at home, you will need to follow your timetable and access your lessons on Microsoft teams (see how to PowerPoint below). You can then email your teacher your work.

Office 365

My Maths

GCSE Pod

Seneca Learning

BBC Bitesize

Using Microsoft Teams for
home learning and
homework



PowerPoint demonstrating how to access and use teams for
online learning and homework.

October Half Term Holiday
Countdown

17 00 34 42
days hrs min sec





Revision Strategies

Top tips for effective revision...

Start early

It's a good idea to have a routine with revision. Year 10 will sit ECAs this year, so a schedule for revision can help to manage their time. We offer Enrichment sessions every day after school in all subjects in Year 11, but the revision at home can start now.



Plan and block out time for revision

A revision timetable will help to manage time. Block out time for socialising, exercising and other breaks or plans. Use one of our templates as a starting point!

Decide what you're going to revise

All subjects have provided curriculum journeys with all exam topics on to help to plan your revision. This can also be found on the Academy website in the student and Parent/Carer areas, on the Student Portal and in this information guide!



Look after yourself

It's important to look after you. Eating a healthy, balanced diet, getting exercise, a good night's sleep and trying to stay calm and positive are all key to your success ahead of your exams.

We have lots of exam support and information available in the Academy for students and parents/carers.

Post 16

Where your KS4 studies will lead you...

Whilst you are considering your courses for KS4 you may also be thinking about your long-term career choices and what options are available for you here at Grace Academy Darlaston after you have completed your GCSEs.

We, at Grace, pride ourselves in meeting your individual needs and we provide a comprehensive range of Level 3 courses including A-Levels and BTECs. These courses develop the knowledge and understanding that you will have gained during KS4. All of our courses have been carefully selected to allow a natural progression from your GCSEs and to prepare for your next steps after leaving Grace in Year 13, whether that be university, apprenticeships or the world of work.

Exciting opportunities await you in Post 16. When you continue your studies in Post 16 you will be given extensive extra-curricular choices. You can get involved in the Post 16 Committee and make a real difference both inside school and in our wider community. You will be given subject specific opportunities to extend your learning outside of the classroom and you can take part in charity initiatives. You will also get the opportunity to enjoy all of the social aspects of our Post 16.

You will get support with your Post 18 choices too. We will support you with your university applications and careers interviews. We will make sure that you are given all the advice and guidance needed in order to achieve your full potential!

I wish all of you the very best in choosing your options and I look forward to working with you in the very near future. If you have any questions about Post 16 please do not hesitate to contact me.

Mr Pountney

Head of Post 16

jamespountney@darlaston.graceacademy.org.uk

Post 16

After successfully completing your KS4 courses we look forward to welcoming you into the next step of your journey - our thriving and vibrant Post 16

YOUR FUTURE

A LEVELS

BTECS

APPRENTICESHIPS

UNIVERSITIES



Notes Page:

Our Vision

Our Grace Vision is to develop well-educated, considerate and caring citizens with a strong sense of values, who will succeed in and contribute to modern society. At the heart of all we do is the passion to provide an outstanding education for our students which develops the whole person through our Christian ethos.

It is our Christian ethos that makes Grace Academy unique, shaping who we are as an organisation, and providing a clear road map for success through our five shared values of grace, respect, integrity, potential and excellence.

Our aim is for our shared values to be outworked through our Academy culture, embedded across an enhanced curriculum, role modelled by our staff, and explored and demonstrated by all of our students.

Our vision makes Grace Academy a better place to learn, work and achieve.

