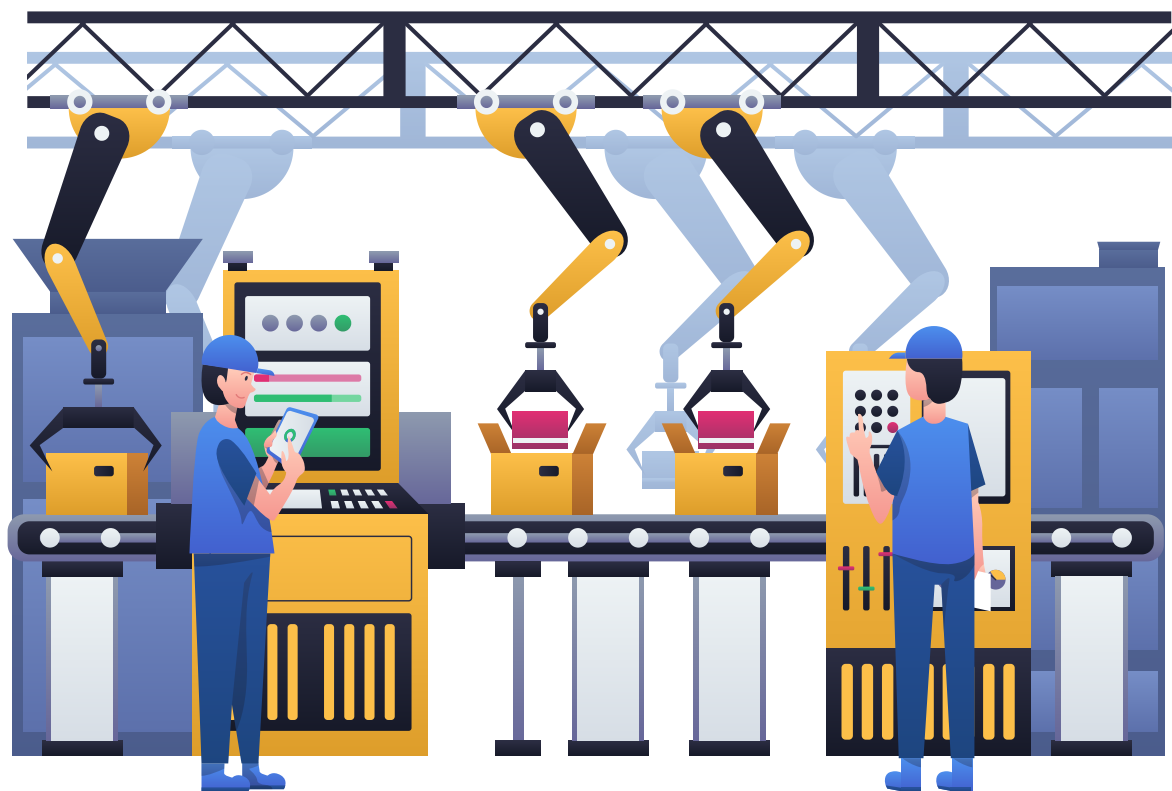
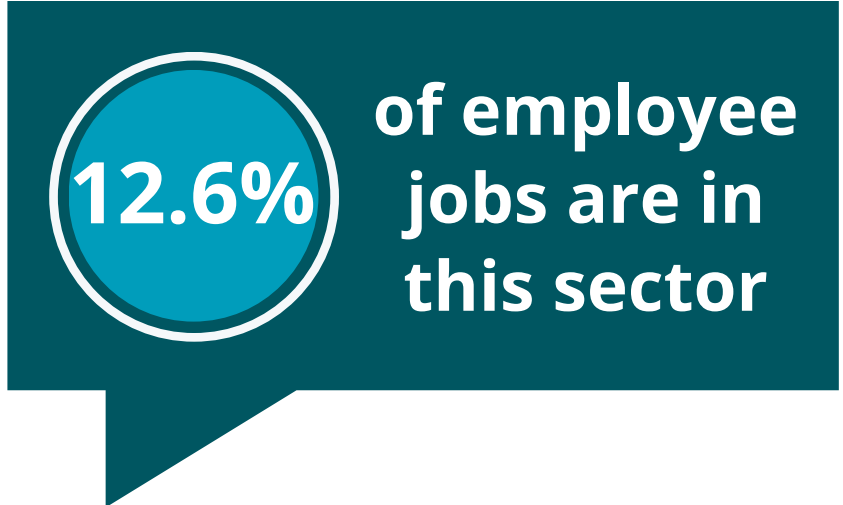


## Manufacturing and Engineering



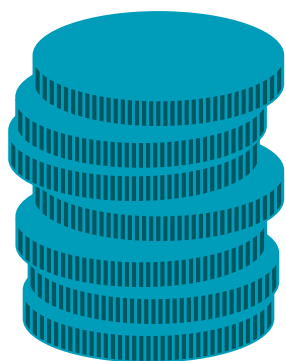
### Sector employee jobs<sup>1</sup>

**12,450**  
people employed  
in the sector



West Midlands: 11.8%  
England: 8.8%

### Sector earnings<sup>2</sup>



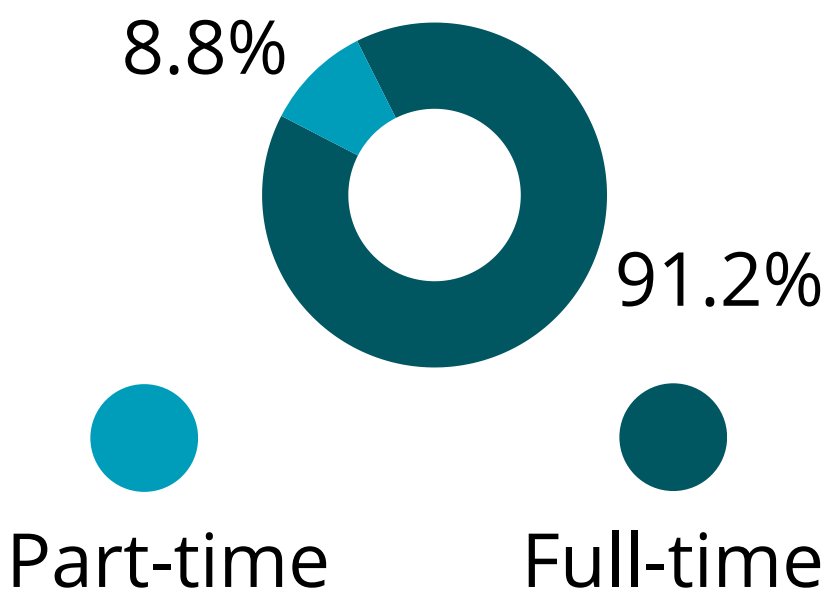
The UK average gross income is **£33,631** a year.

### Working hours<sup>2</sup>



On average people work **38.5** hours a week (UK).

### Working patterns<sup>1</sup>



### Most vacancies in 2024<sup>3</sup>

- Plant and machine operatives
- Welding trades
- Mechanical engineers
- Engineering technicians
- Production and process engineers
- Metal machining setters and operators

### Sector vacancies<sup>3</sup>



### Most requested skills<sup>3</sup>

- Communication • Tooling
- Machinery • Customer service
- Management • Operations
- Problem solving • Welding
- Engineering • Machining
- Technical drawings • Sales

### Which sub-sectors employ the most people?<sup>1</sup>



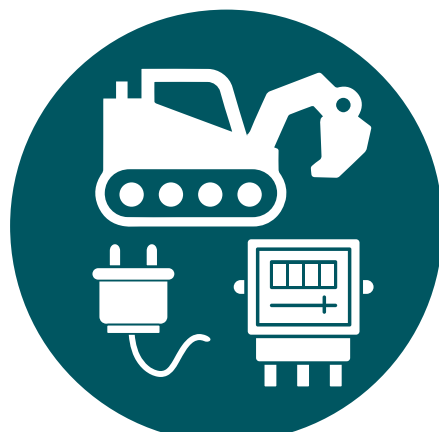
**Metals and metal products**  
6,500 jobs



**Rubber and plastic products**  
800 jobs



**Food products**  
800 jobs



**Machinery and electrical equipment**  
700 jobs



**Automotive**  
600 jobs