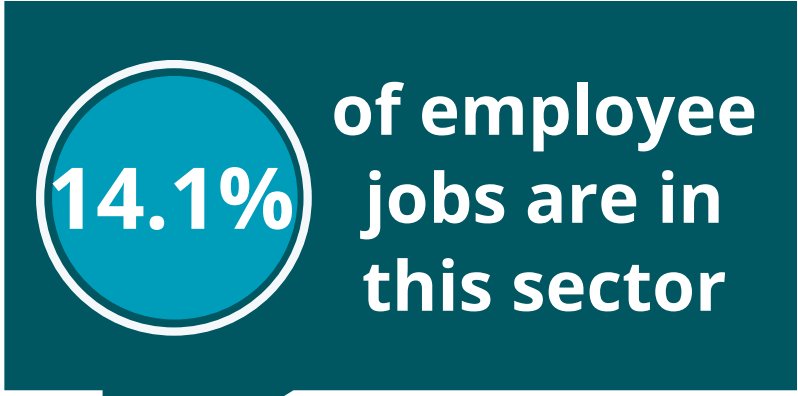
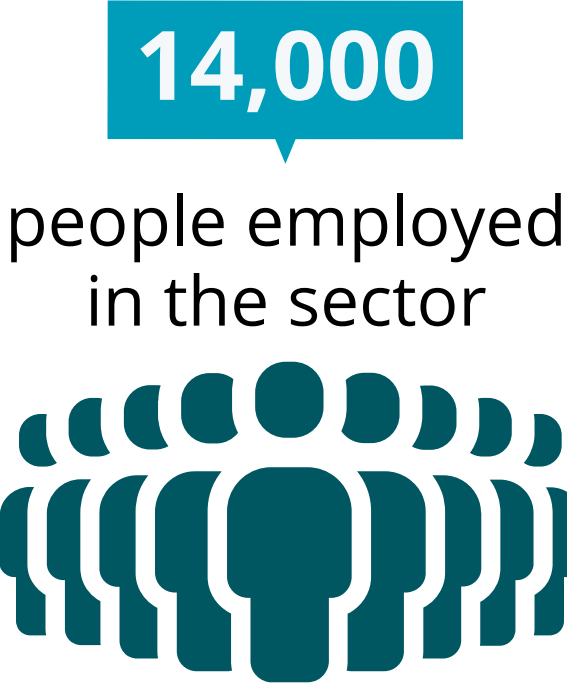


## Health and Social Care

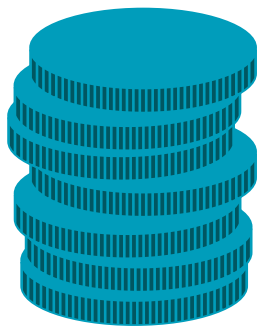


### Sector employee jobs<sup>1</sup>



West Midlands: 13.6%  
England: 13.3%

### Sector earnings<sup>2</sup>



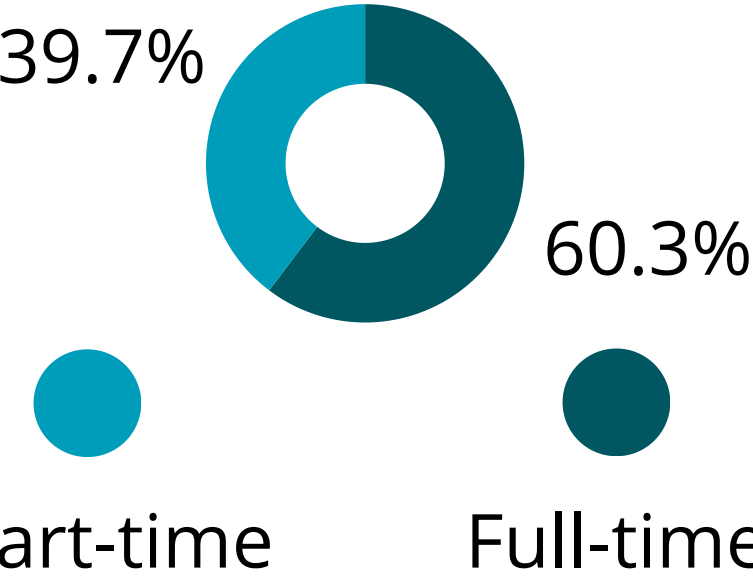
The UK average gross  
income is **£26,215** a year.

### Working hours<sup>2</sup>



On average people work  
**37.1** hours a week (UK).

### Working patterns<sup>1</sup>



### Most vacancies in 2024<sup>3</sup>

- Care workers/home carers
- Social workers
- Nurses & nursing professionals
- Health services & public health managers and directors
- Care managers and directors

### Sector vacancies<sup>3</sup>



### Most requested skills<sup>3</sup>

- Communication skills
- Management & leadership
- Nursing
- Planning
- Teaching
- Personal care
- Social work
- Auditing
- Mental health
- Psychology

### Which sub-sectors employ the most people?<sup>1</sup>



**Hospital  
services**  
5,000 jobs



**Medical and dental  
practices**  
1,000 jobs



**Other health  
services**  
3,000 jobs



**Nursing and  
residential care**  
2,500 jobs



**Other social  
care services**  
2,500 jobs